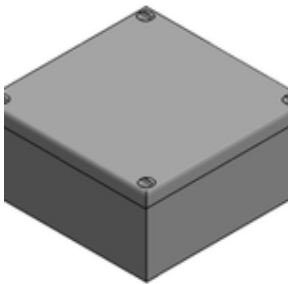




Cable Management & Fixings | Adaptable Boxes

100x100x75mm (4x4x3") Adaptable Box Plain

100x100x75mm (4x4x3")
Adaptable Box Plain



General Information

Brand	Metpro Ltd
Product Type	Metal Adaptable Box
Material	Sheet Steel
Mounting	Surface
Finish	Pre Galvanised
Colour	Galvanised
Standards	LU Standard 1-085
Length	100 mm
Description	Comprises body flanged cover and M5 x 10mm lid fixing screws. Plain sides.
c/w Door/Lid	N
Cover Material	Sheet Steel
Width	100 mm
Depth	75 mm